



DENISE BIBRO FINE ART, NYC

PRESENTS

PAULA ELLIOTT: *POINT OF VIEW*

APRIL 7 - MAY 30, 2026



Outcomes #3,
Charcoal, pencil, pastel and acrylic, 2025, 42" x 40"

5000



Point of View

Point of View marks a pivotal evolution in the artist's practice, unfolding through two interconnected bodies of work: Beginnings and Outcomes.

Outcomes expands upon the discoveries made in Beginnings, embracing a greater freedom of movement and expression. These large-scale works on paper foreground the monumental and formal power of a singular, commanding form. Through their scale and clarity, they assert a strong and individual presence, inviting viewers to encounter each form as both object and atmosphere—at once grounded and expansive.

Beginnings comprises a group of small-scale works that serve as a prelude to a new, large-scale series on paper initiated this past year. Working within an intimate format has opened space for renewed experimentation with the rich and expressive possibilities of pastel. Sculptural form continues to drive the artist's inquiry, now shaped by a heightened spatial intricacy. Within the constraints of scale, each composition explores the emergence of a distinctive—at times eccentric—shape or object, emphasizing both structure and nuance.





PAULA ELLIOTT



Outcomes #1,
Charcoal, pencil, pastel and acrylic, 2025, 42" x 40"

5000

db DENISE BIBRO
FINE ART, INC

www.denisebibrofineart.com
info@denisebibrofineart.com / (917) 687 - 2059



Outcomes #2,
Charcoal, pencil, pastel and acrylic, 2025, 42" x 40"

5000

db DENISE BIBRO
FINE ART, INC

www.denisebibrofineart.com
info@denisebibrofineart.com / (917) 687 - 2059



Outcomes #3,
Charcoal, pencil, pastel and acrylic, 2025, 42" x 40"

5000

db DENISE BIBRO
FINE ART, INC

www.denisebibrofineart.com
info@denisebibrofineart.com / (917) 687 - 2059



Outcomes #4,
Charcoal, pencil, pastel and acrylic, 2025, 42" x 40"

5000

db DENISE BIBRO
FINE ART, INC

www.denisebibrofineart.com
info@denisebibrofineart.com / (917) 687 - 2059



Outcomes #5,
Charcoal, pencil, pastel and acrylic, 2025, 40" x 42"

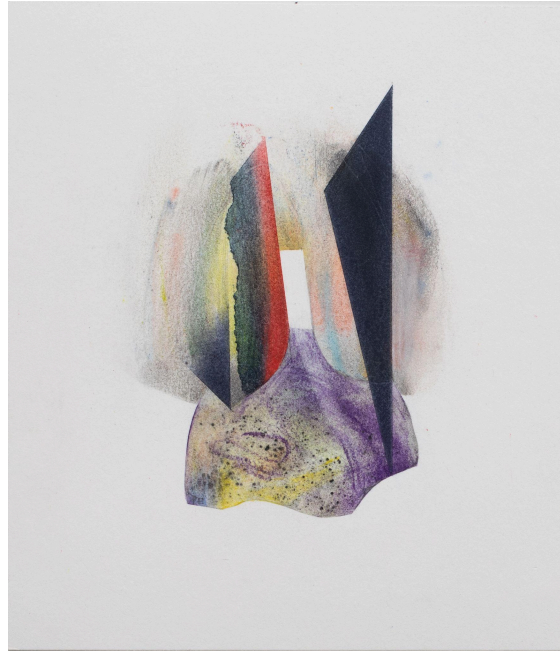
5000

db DENISE BIBRO
FINE ART, INC

www.denisebibrofineart.com
info@denisebibrofineart.com / (917) 687 - 2059



Beginnings #5, Charcoal, pencil, pastel, 2025, 7" X 6"

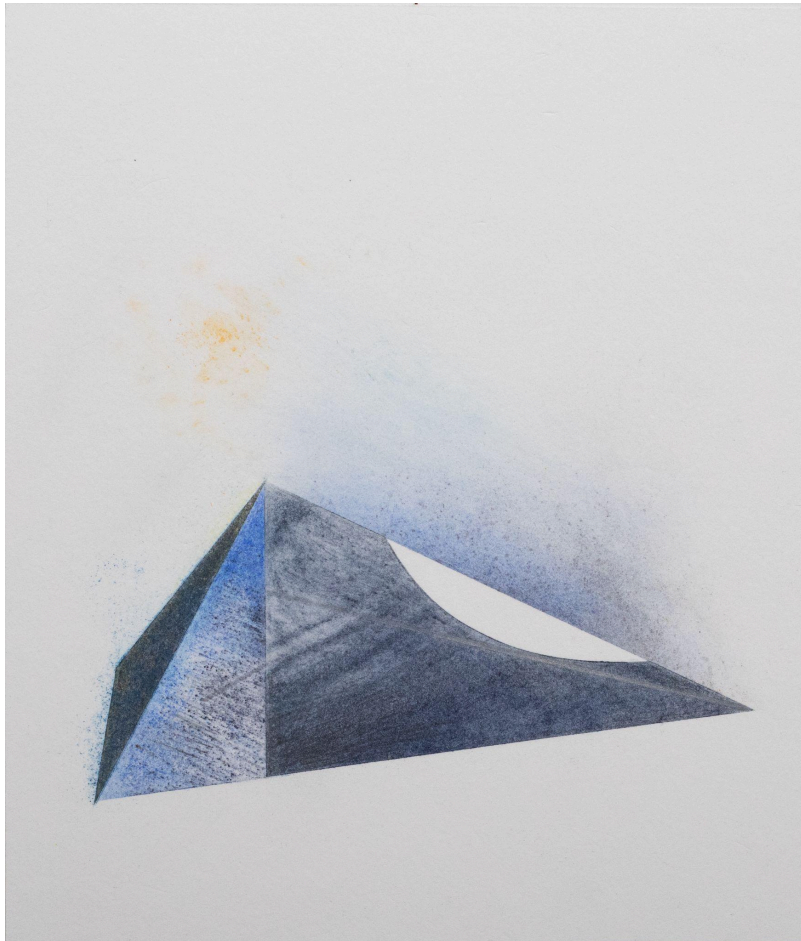


Beginnings #6, Charcoal, pencil, pastel, 2025, 7" X 6"

950 Each

db DENISE BIBRO
FINE ART, INC

www.denisebibrofineart.com
info@denisebibrofineart.com / (917) 687 - 2059

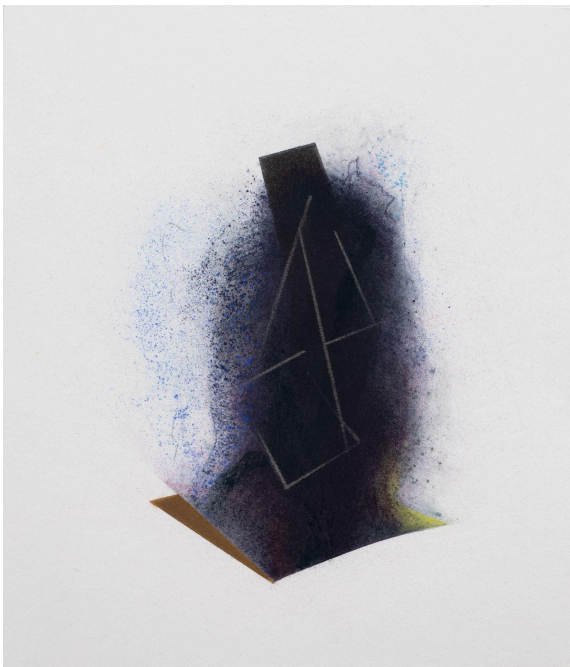


Beginnings #7, Charcoal, pencil, pastel, 2025, 7" X 6"

950



www.denisebibrofineart.com
info@denisebibrofineart.com / (917) 687 - 2059



Beginnings #3, Charcoal, pencil, pastel, 2025, 7" X 6"

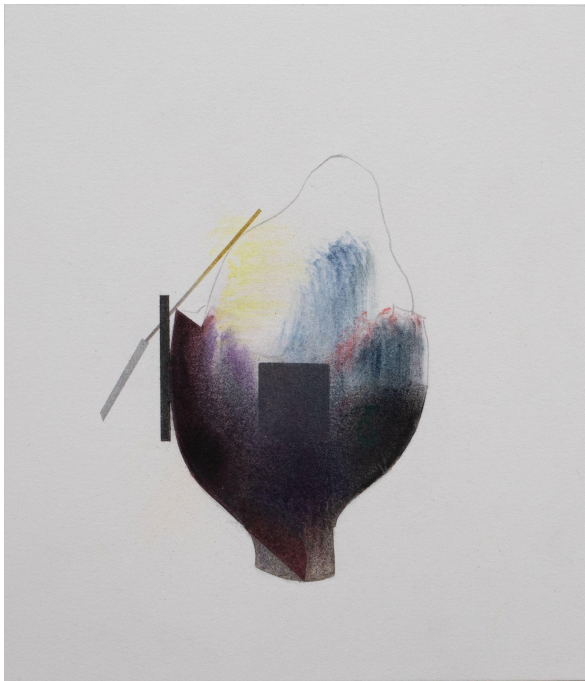


Beginnings #2, Charcoal, pencil, pastel, 2025, 7" X 6"

950 Each

**db DENISE BIBRO
FINE ART, INC**

www.denisebibrofineart.com
info@denisebibrofineart.com / (917) 687 - 2059



Beginnings #4, Charcoal, pencil, pastel, 2025, 7" X 6"



Beginnings #1, Charcoal, pencil, pastel, 2025, 7" X 6"

950 Each

db DENISE BIBRO
FINE ART, INC

www.denisebibrofineart.com
info@denisebibrofineart.com / (917) 687 - 2059



Artist Statement

Over the past decade, my artistic practice has been primarily conceived and executed on paper. In this extensive body of work, I often focus on a solitary shape, aiming to capture in a single image the unique essence of an abstract "object."

Outcomes, my latest large-scale series, examines the monumental and formal potential of this singular, distinctive form. As with an earlier group of works titled Oddballs, I draw inspiration from a poem by A. R. Ammons—lines that continue to spark my creativity:

fly the definite lest it lock you in! have solvent by should

the imperative devise you a vice: see a spread of possibilities,

not an onion plot: the juggler has twice as many balls as hands

because it's all up in the air

My process typically begins with a simple sketch. Working in pastel, often combined with charcoal and pencil, I allow ideas to emerge unfixed and open-ended. Each image develops as if on its own terms, gradually taking shape through refinement. In the small-scale works titled Beginnings, these exploratory forms provide a foundation for elaboration in larger pieces. The object and its inventive field of play remain the central focus.

Throughout the creative process, distinct contrasts arise—diffuse atmospheres versus strict geometrical structures, order versus fluidity, spontaneity versus deliberation—inviting interpretation and encouraging viewers to engage with each image as both form and presence.





Solo Exhibitions

- Denise Bibro Fine Art, *Point of View*, New York, NY, April 2026- May 2026
- Denise Bibro Fine Art, *Oddities and Absurdities*, New York, NY, December 2024–January 2025
- Denise Bibro Fine Art, *Elusive Objects*, New York, NY, February–March 2022
- Denise Bibro Fine Art, *Object in Mind*, New York, NY, April–May 2021
- Furlong Gallery, *Indefinite Objects*, University of Wisconsin–Stout, September–October 2019
- Hampden Gallery, University of Massachusetts Amherst, October–November 2018 (including three curated solo presentations by Jeanette Cole)
- Denise Bibro Fine Art, *New Works*, New York, NY, March–May 2018
- Catskill Art Space, January–February 2017 (Three Solos, curated by Ally Anderson, Nancy Princenthal, and Patterson Sims)
- Austin ArtWorks Center, Feature Artist, August 2015
- 4610 Center Blvd, *Settings*, Long Island City, NY, May 2014
- Ben Shahn Galleries, William Paterson University, March 1998
- Korn Gallery, Drew University, April 1991
- 55 Mercer Gallery, April 1985
- Foundry Gallery, March 1985
- Foundry Gallery, September 1982
- Dorsky Gallery, October 1980
- Billiard Room Gallery, April 1980
- Haas Gallery, Bloomsburg State College, May 1976
- Bucknell University, 1975
- Marine Midland Bank Gallery, 1975
- Wells College, 1975

Group Exhibitions

- Site: Brooklyn Gallery, *Geometry the Shape of Things*, Online Exhibition, March–April 2026 (Juror: Hannah Sage Kay)
- Grinnell College (Grin Cupola), *Hatchet of Hope*, Online Exhibition, July 2023–June 2024
- The Modernist, Group Show, curated by Orestes Gonzalez, June 2022
- Site: Brooklyn Gallery, *Monochrome*, juried by Donna Harkavy, November 2019
- The London Group, *Drawing Distinctions Part II*, Cello Factory, April 2019
- Context Art Miami, with Denise Bibro Fine Art, December 2018
- Furlong Gallery, *Drawing Distinctions Part I*, September–October 2018

- Denise Bibro Fine Art, *Art from the Boros V*, November 2017
- Flux Factory, *Pandaemonium*, curated by Seth Larson & Abby Enstminger, May 2017





- The National Arts Club, Fourth Annual Drawing Invitational, January–March 2017
- Lesley Heller Workspace, Holiday Salon, December 2015
- Gold Coast Arts Center, *Abstract Architecture*, September 2015
- Jeffrey Leder Gallery, *Works on Paper III*, June 2014
- Islip Art Museum, *Couples* (2008); *Line Dancing* (2003)
- Nanjing University of the Arts Museum, November 1997
- A.I.R. Gallery, October 1997
- Herbert F. Johnson Museum of Art, July 1978
- Corcoran Gallery of Art, 1975

Selected Collections

- Saks Fifth Avenue Corporation
- Hoffmann-La Roche
- IBM (multiple locations)
- Citibank
- Zale Corporation
- Chase Bank
- University of Central Florida
- Herbert F. Johnson Museum of Art
- Andersen Gallery, Bucknell University
- University of Wisconsin–Stout

Education

- MFA, Cornell University, 1975
- BS, Fine Arts, University of Wisconsin–Stout, 1972
- Additional Studies: London, UK (1972–73); Universidad de las Américas Puebla, 1968

Grants & Fellowships

- Fellow in Painting, Virginia Center for the Creative Arts, Summers 1991, 1992, 1994
- Fellow in Painting, Ragdale Foundation, Summer 1993
- Noyes Fellow, Cornell University, 1975





Studio visits with Paula Elliott can be arranged by appointment.

Denise Bibro Fine Art is **available by appointment**.
We are **available for consultations, installations, curatorial advice, appraisals, and other related services**. Please email
or contact us via the information below.

www.denisebibrofineart.com

info@denisebibrofineart.com / (917) 687 - 2059

